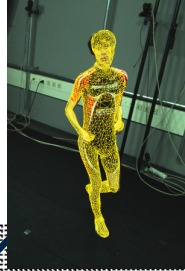
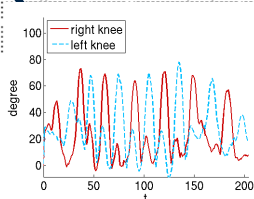
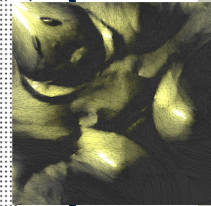
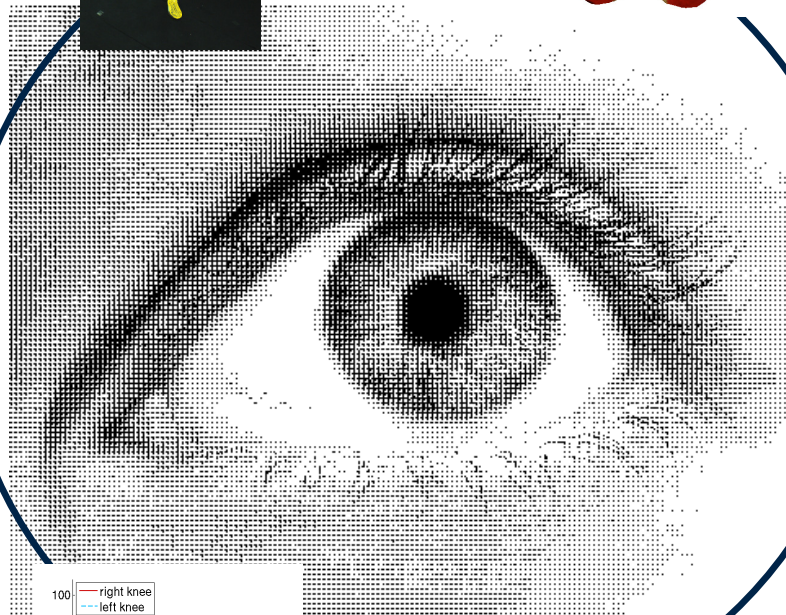


Offer: Master's Thesis

Computer
Vision



Computer
Graphics



$$\int_E K(x, B) \mu(dx)$$

Mathematics

Are you interested in working at the intersection of computer vision, computer graphics, and mathematics?

Profile: Programming skills in at least two of C/C++, OpenGL, Matlab

Topics: Texture Acquisition, Evaluation of Local Descriptors, Occlusion Detection

Contact: Juergen Gall (jgall@mpi-inf.mpg.de)



mpi max planck institut
informatik